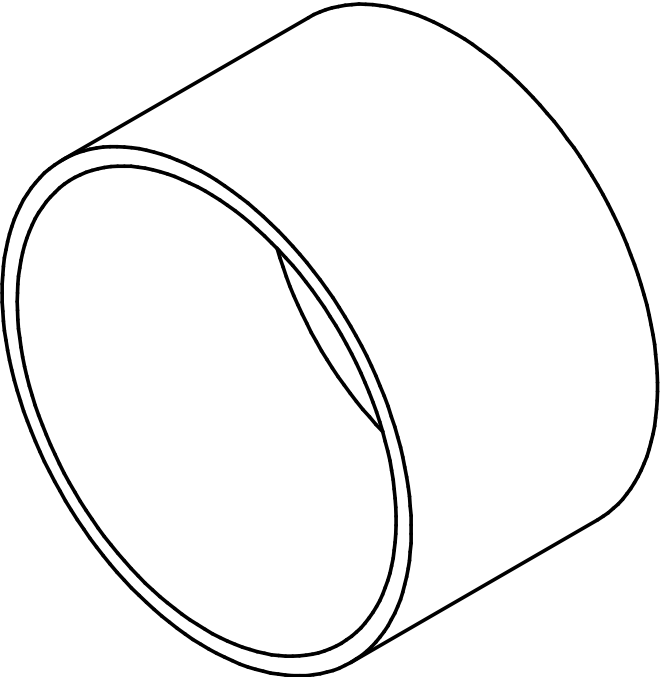
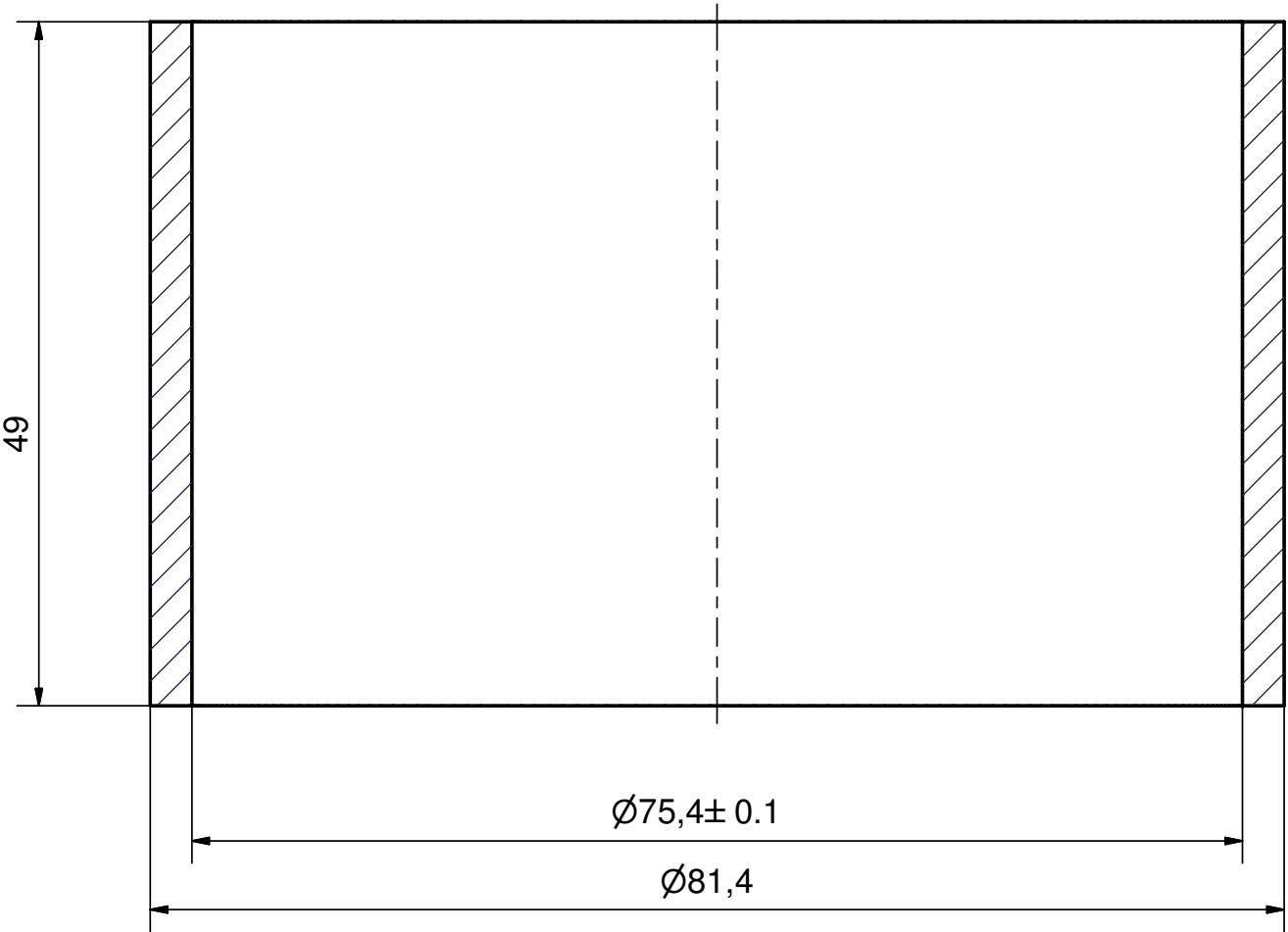


6 5 4 3 2 1

3.2



(1 : 1)

NOTES:

- 1. Round sharp edges $R = 0.2$ mm.
- 2. Degas ceramics for 1 hour at 800°C in clean vacuum ($P < 10^{-5}$ mbar). After that, handle with gloves only.
- 3. Pack in lint-free paper or non-polymeric plastic bag.

Issued all design changes as Rev C (TIO) - 4/19/07 - SAB

								Rev. C			
								SCALE: 2:1		MAT: Ceramics, Al-300	
								ASSEMBLY: 75 kW CW Input Coupler			
				Date	Name	DESIGNATION: EXTERNAL COVER TUBE FOR COLD WINDOW					
				Drawn	10/9/04					Denis	
				Checked	08-06-05					VM	
				Standard							
								100.320.002		1 A3	
State	Changes	Date	Name								

6 5 4 3 2 1